



LUND
UNIVERSITY

Ranking at LU/Richard Stenelo

2015 | EDUCATION, RESEARCH AND COLLABORATION SINCE 1666



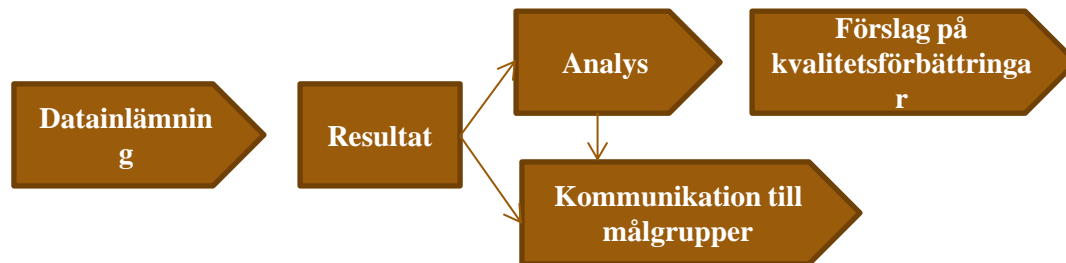
Ranking

- Whether one likes rankings or not is not the issue - rankings are here to stay
- Universities must discuss them and decide how to act
- External perceptions of rankings matter – often more than we care to admit. This pertains to scholarships, research relationships, student applications and in fact to faculty members considering an appointment.
- Certain employers only consider applicants from programs which fall within specified ranks.
- Media and politicians love to use them.... Denmark use rankings for immigration purposes
- Universitas21 country ranking:
 - Sweden number 2 in the world, after USA
 - Overall, the top 10 countries in rank order are: the United States, Sweden, Canada, Denmark, Finland, Switzerland, the Netherlands, the United Kingdom, Australia and Singapore.



Ranking and Lund University

- A ranking group within the university – meets about 6 times a year
 - Analysis of rankings
 - Looking at how we report and what data?
 - How do we communicate ranking? – Communication strategy
 - Which rankings do we use and report to?
 - Suggest actions based on results



Ranking and Lund University

- Current ranking project with external international expertise (Illuminate Consulting group)
- Encourage more international cooperation (education and research)
- Possible changes in reporting
 - Definition of an International student
 - Definition of an International staff
 - How to count staff categories, can have both a negative and positive result
 - Quality assurance of data submitted
 - Citation rules (who is first and last in the list of authors) – strong tradition in Sweden
- LU mainly communicate and work with QS, THE and ARWU (Shanghai ranking)



LU in different rankings

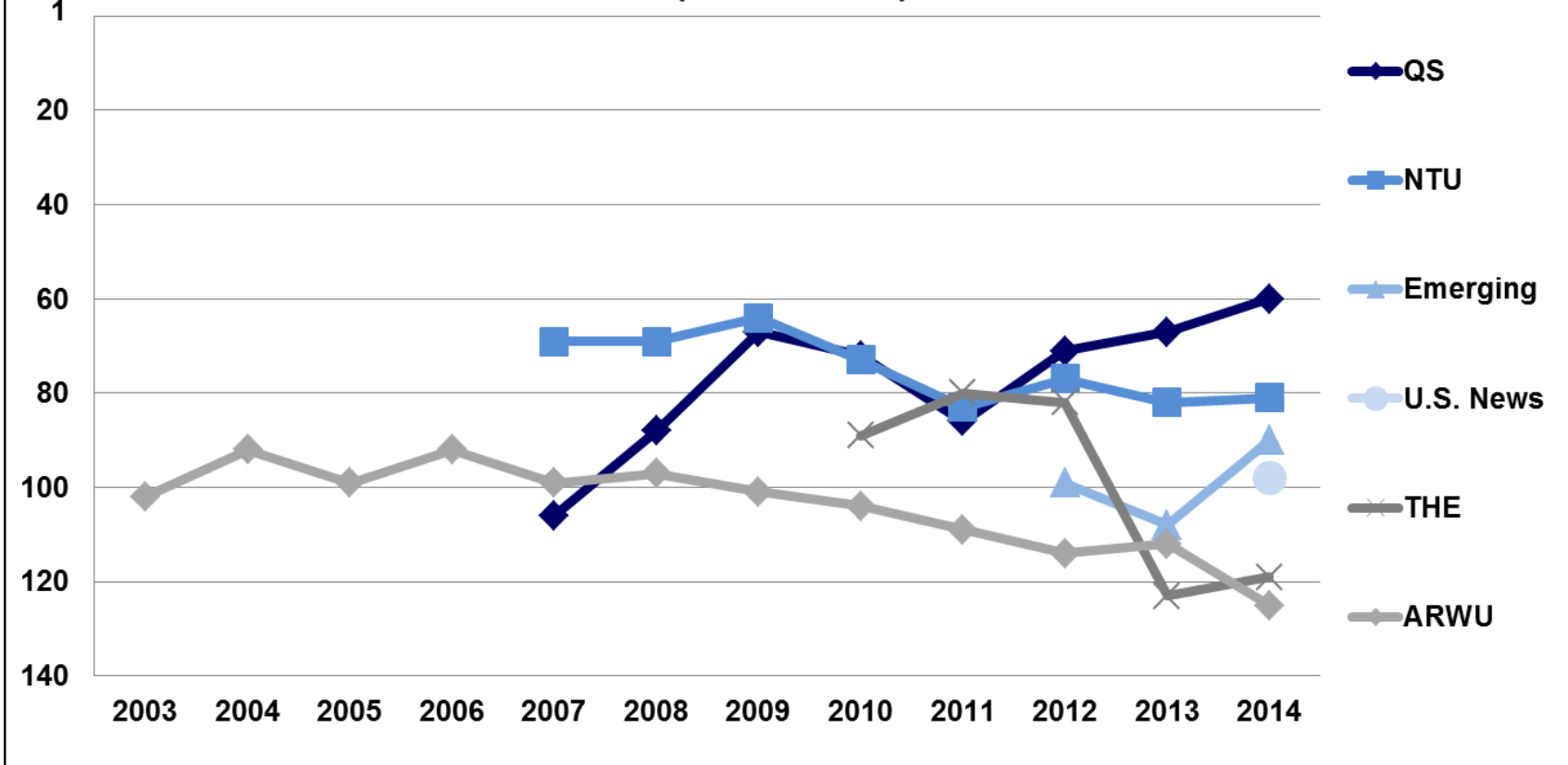
	QS	THE*	Shanghai**
2014	60	119	101-150
2013	67	123	101-150
2012	71	82	101-150
2011	86	80	101-150
2010	72	89	101-150

* THE= Times Higher Education

** Shanghai ranking = Academic Ranking of World Universities (ARWU)



Lund University in International University Rankings (2003-2014)



Notes: Where the ranking bracket was published, the ordinal rank was calculated based on the university's component scores.
 Source: ARWU, Emerging, NTU, QS, THE, USNWR.



Ranking in recruitment

- Very important for our recruitment efforts
 - “a Top world 100-university”
 - used in different media/publications
- Scholarship organisations, i.e LPDP, only top 200 subjects on QS ranking
- Ranking websites - important tool for recruitment, i.e advanced profiles
- Ranking of Educational systems, Sweden number 2 in the world, after USA
- Communication of ranking results to prospective students, current students and alumni





LUND
UNIVERSITY